

# Geneva School District 2007 Enrollment Projections A Fact Based Review by:



[www.genevaTaxFACTS.org](http://www.genevaTaxFACTS.org)

# School Board Oath of Office

"I, (name of member or successful candidate) , do solemnly swear (or affirm) that I will faithfully discharge the duties of the office of member of the Board of Education (or Board of School Directors) of ( name of school district ), in accordance with the Constitution of the United States, the Constitution of the State of Illinois, and the laws of the State of Illinois, to the best of my ability.

"I further swear (or affirm) that:

**"I shall respect taxpayer interests by serving as a faithful protector of the school district's assets;**

"I shall encourage and respect the free expression of opinion by my fellow board members and others who seek a hearing before the board, while respecting the privacy of students and employees;

"I shall recognize that a board member has no legal authority as an individual and that decisions can be made only by a majority vote at a public board meeting; and

"I shall abide by majority decisions of the board, while retaining the right to seek changes in such decisions through ethical and constructive channels

# 2007 REFERENDUM ENROLLMENT PROJECTIONS

Where did the numbers come from?  
How did the board explain it?  
Was the answer satisfactory?

# Did this answer give you confidence in a board elected to “respect taxpayer interests”?

On April 23, 2012, School Board President, Mark Grosso said he would respond to questions about the 2007 referendum enrollment projections, **but would not allow public comment after his explanation?**

*“..The Board President ... reported that he reviewed the five-year old, 2006 Kasarda report projections, and had spoken to both current and past members of the Board of Education in an attempt to determine how the projections were utilized.*

*He was told that **projections from the Kane County Regional Office of Education and local developers were used in addition to Kasarda’s**, and that it **appeared** to him that a **multiplier had been used** which resulted in a number higher than Kasarda’s.*

***He didn’t know why** but added there **would not be an investigation because too much time had gone by and too many of the people were no longer available**. He stated that we can’t go back in history, but going forward the Board of Education is concerned about and committed to reducing the District’s debt.”*

Source: <https://v3.boardbook.org/Public/PublicItemDownload.aspx?ik=32444669> – Minutes of School Board Meeting of April 23, 2012.



GENEVA  
COMMUNITY UNIT SCHOOL DISTRICT 304

Demographic Trends  
and  
Enrollment Projections

**First posted on website  
after 3/27/2012.  
GenevaTaxFACTS  
requested via FOIA and  
was provided a copy on  
2/29/2012. Not  
previously available?**

Prepared by  
John D. Kasarda, Ph.D.  
Consulting Demographer

Updated November 2006

Enrollment Projections  
Prepared by

John D. Kasarda, Ph.D  
Consulting  
Demographer

Updated November  
2006

Cost: \$14,700  
(three reports from 2005,  
2006, 2011)

# (Kasarda B Projection - 2006 – page 28)

Table 11

Enrollment Projection Assuming Future Fertility Rates Remain Constant (through 2011) and Both Turnover of Existing Housing Units and Future New Residential Development Occur as Anticipated through 2016–17

<i>Series B Projection</i>											
Grade	2006–07	2007–08	2008–09	2009–10	2010–11	2011–12	2012–13	2013–14	2014–15	2015–16	2016–17
K	376	398	399	396	402	407	405	402	404	398	401
1	409	416	438	439	436	442	445	443	440	442	436
2	429	423	430	452	453	450	453	456	454	451	453
3	455	437	431	438	460	461	457	460	463	461	458
4	441	475	457	451	458	480	477	473	476	479	477
5	429	455	489	471	465	472	491	488	484	487	490
6	501	438	464	498	480	474	480	499	496	492	495
7	451	510	447	473	507	489	481	487	506	503	499
8	491	457	516	453	479	513	494	486	492	511	508
9	482	509	475	534	471	497	530	511	503	509	528
10	500	484	511	477	536	473	498	531	512	504	510
11	462	492	476	503	469	528	466	491	524	505	497
12	428	455	485	469	496	462	522	460	485	518	499
K–12	5,854	5,949	6,018	6,054	6,112	6,148	6,199	6,187	6,239	6,260	6,251

Source: [https://www.geneva304.org/district\\_information/documents/Kasarda\\_CUSD\\_304\\_2006.pdf](https://www.geneva304.org/district_information/documents/Kasarda_CUSD_304_2006.pdf)

# Let's keep a running total...

	Kasarda Series B (Middle 2006)
2006 (actual)	5854
2007	5949
2008	6018
2009	6054
2010	6112
2011	6148
2012	6199
<b>Total Increase</b>	<b>345</b>

Mr. Kasarda's "Middle of the Road" projection was an **increase of 345** students from 2007 to 2012.

**(Based on this increase, do you think the referendum for building of two new schools would have been saleable to voters based on that number?)**

# (Kasarda C Projection- 2006 – page 29)

Table 12

Enrollment Projection **Assuming Future Fertility Rates Remain Constant (through 2011) and Both Turnover of Existing Housing Units and Future New Residential Development Are Greater than Anticipated through 2016–17**

Series C Projection											
Grade	2006–07	2007–08	2008–09	2009–10	2010–11	2011–12	2012–13	2013–14	2014–15	2015–16	2016–17
K	376	409	413	412	417	423	425	424	427	425	429
1	409	428	461	465	464	469	467	469	468	471	469
2	429	432	451	484	488	487	487	485	487	486	489
3	455	445	448	467	500	504	499	499	497	499	498
4	441	484	474	477	496	529	524	519	519	517	519
5	429	462	505	495	498	517	543	538	533	533	531
6	501	446	479	522	512	515	527	553	548	543	543
7	451	518	463	496	539	529	526	538	564	559	554
8	491	466	533	478	511	554	537	534	546	572	567
9	482	518	493	560	505	538	574	557	554	566	592
10	500	495	531	506	573	518	544	580	563	560	572
11	462	502	497	533	508	575	515	541	577	560	557
12	428	466	506	501	537	512	574	514	540	576	559
K–12	5,854	6,071	6,254	6,396	6,548	6,670	6,742	6,751	6,823	6,867	6,879

Source: [https://www.geneva304.org/district\\_information/documents/Kasarda\\_CUSD\\_304\\_2006.pdf](https://www.geneva304.org/district_information/documents/Kasarda_CUSD_304_2006.pdf)



# Let's keep a running total...

	Kasarda Series B (Middle 2006)	Kasarda Series C (Maximum 2006)
2006 (actual)	5854	5854
2007	5949	6071
2008	6018	6254
2009	6054	6396
2010	6112	6548
2011	6148	6670
2012	6199	6742
<b>Total Increase</b>	<b>345</b>	<b>888</b>

Mr. Kasarda's  
"absolute maximum"  
projection was an  
**increase of 888**  
students from 2007 to 2012.

**Mr. Kasarda's  
RECOMMENDATION was to  
use Series B – increase of 345!**

So, did the school district follow the consultant's advice and use ...

Series B – middle of the road?

or

Series C- maximum enrollment?

Neither!

# Q &A- April, 2007 Referendum

Public Forums Spring 2007

<https://www.geneva304.org/CO/ReferendumInfo/ReferenduminfoQA.htm>

## Geneva CUSD 304 April, 2007 Referendum

### Q & A

#### 1) What is the purpose of this referendum, and why is this referendum being run at this time?

The April referendum is to secure funding to build two elementary schools, complete life/health/safety projects at the other school buildings, provide technology improvements at all schools, and a modest maintenance facility to replace the building on McKinley Street. These projects reflect the Phase I recommendations from the District's Facility Master Plan adopted in June, 2006.

Our current District enrollment of 5,854 students is more than double the entire District enrollment in 1992, which is an average yearly increase of 214 students. This growth in enrollment requires the construction of new schools to meet our obligation to provide for all the students of the District.

**9) What has the enrollment growth in the District been in the past, and how accurate have the enrollment projections been?**

As reflected in the chart that follows, the District enrollment has more than doubled and has grown by approximately 3000 students since 1992; averaging 214 new students per year. The projections for enrollment growth by the District have been 99% accurate in the past five years. These projections are calculated by District officials with various scenarios in the formulas and have been verified by the Kasarda consulting firm. The figures below demonstrate projections including new housing development in the Mill Creek, Tall Grass, Tanna Farm, and Settlements of LaFox areas.

## **Where are the projections that Dr. Kasarda verified?**

[https://www.geneva304.org/district\\_information/documents/Kasarda\\_CUSD\\_304\\_2006.pdf](https://www.geneva304.org/district_information/documents/Kasarda_CUSD_304_2006.pdf) (Page 3)

# \$ What were taxpayers told?

## Advertised: total amount of referendum..

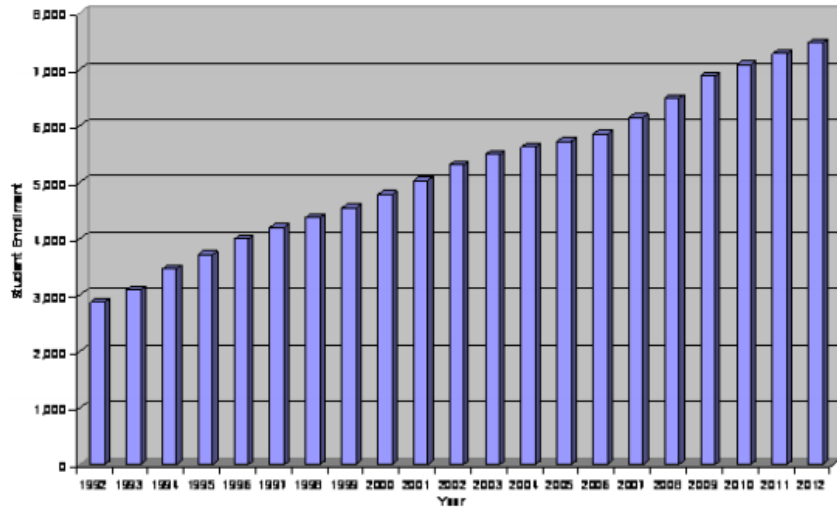
The total amount for this referendum is \$79,990,000. Approximately sixty percent of the funds, \$46.4 million, is for the construction of two new elementary schools, and a modest replacement maintenance building, and forty percent of the funds is for the necessary preventive maintenance of existing District buildings.

## Advertised: How would the referendum impact property taxes?

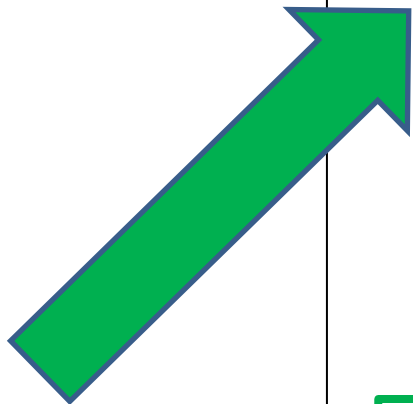
The tax rate that is allocated to the repayment of debt will not increase with the successful passage of a referendum in April 2007. As existing debt is paid, the new debt will be phased in as part of careful financial planning for the future. If your tax bill increases, it will be because the value of your property has increased.

# Geneva 304-Real & Projected Enrollment Grades K-12

Geneva 304 Real & Projected Enrollment Grades K - 12



Year	Grades K -12
1992	2,878
1993	3,089
1994	3,461
1995	3,717
1996	3,991
1997	4,196
1998	4,376
1999	4,541
2000	4,780
2001	5,031
2002	5,305
2003	5,489
2004	5,620
2005	5,723
2006	5,854
2007	6,145
2008	6,489
2009	6,884
2010	7,080
2011	7,276
2012	7,472



This is what was projected to Voters – **Increase of 1618 – TWICE the absolute maximum projected by the consultant and FOUR times the recommended!**

2006	5,854
2007	6,145
2008	6,489
2009	6,884
2010	7,080
2011	7,276
2012	7,472

From Q&A Referendum Material  
Posted on School District website

# Here are the results...

	Kasarda Series B (Middle-2006)	Kasarda Series C (Maximum-2006)	2007 Referendum Data provided by CUSD 304 to Voters	2007 Referendum Data Exceeds Kasarda Series B (the Expert Opinion) by:
2006 (actual)	5854	5854	5854	0
2007	5949	6071	6145	196 (3.3%)
2008	6018	6254	6489	471 (7.8%)
2009	6054	6396	6884	830 (13.7%)
2010	6112	6548	7080	968 (15.8%)
2011	6148	6670	7276	1128 (18.3%)
2012	6199	6742	7472	1273 (20.5%)
<b>Projected Increase</b>	345	888	1618	

Source of “advertised” referendum numbers provided by the district is not documented anywhere?

**Question #1**

Did Dr. Kasarda verify the “advertised” enrollment numbers?

**Answer**

No evidence of Dr. Kasarda verifying the inflated figures.



Mr. Kasarda recommended:  
Series B  
**an increase of 345 students**

The “unknown source” supplied by  
the school district website and  
materials provided to the voters:  
**an increase of 1618 students!!**

ACTUAL increase of students as of June 2011:  
**121 students!**

# What did our Administration say?

March 17, 2012

Superintendent Dr. Kent Mutchler said...

*“...we’ve always been following, since I’ve been here, the level B projections. ...as a district in terms of demographics, we have not changed much in enrollment...”*

(transcribed from video clip-3/17/2012 school board retreat)

# What did our School Board say?

March 17, 2012

Former Board of Education President (2007), Mary Stith said...

*“..people think we took the fast and aggressive approach in planning schools when in reality, if we had done that, we would be seeing an empty school in Fox Mill right now...People want to hear this...We didn’t use our fastest growth in planning.”*

(transcribed from video clip-3/17/2012 school board retreat)

# What does our School Board say?

March 17, 2012

Board of Education President, Mark Grosso said...

**“...since we got this information, we can digest it.. had we had a little more time today, we could probably discuss it right now but I think ..a condensed version of the presentation and highlights at a board meeting and make it available to attendees and the public.. we will have time after reviewing it to ask questions..”**

(transcribed from video clip-3/17/2012 school board retreat)

Source: Video of March 17, 2012 School Board Retreat posted on [www.GenevaTaxFACTS.org](http://www.GenevaTaxFACTS.org)

Shortcut link 4.3

# When asked to explain on April 9...?

On, April 10, 2012

Board of Education President, Mark Grosso emailed Robert McQuillan, a response to his public request on April 9 for an explanation of the difference in enrollment projections...

*Mr. McQuillan,*

*I have determined that any response to your question at last night's Board meeting would not be a productive use of the District's time. The 2006 Kasarda report you referenced is five-years old and I see no benefit to debating its contents at this time.*

**Mark Grosso  
President  
Board of Education  
Geneva C.U.S.D. 304**

# Taxpayers want to be informed

## Question #2

Who can explain why the numbers used for enrollment projections in the 2007 referendum were four times higher than Kasarda's RECOMMENDED B projections?

We still have several people on the Board and Administration that were involved in the 2007 referendum who might shed some light....

## Answer:

(Mark Grosso) "I'm not sure why without some type of full blown investigation... it appears to me that on top of Dr. Kasarda's most enthusiastic projections, we used some type of multiplier or additive and thus the numbers were quite a bit higher than what he (Dr. Kasarda) projected."

2006 School Board  
 Dean Kilburg - President  
 Margaret Selakovich  
 Bill Wilson  
 Susan Shrivvers  
 Mary Stith  
 Autumn Burns  
 Tim Moran

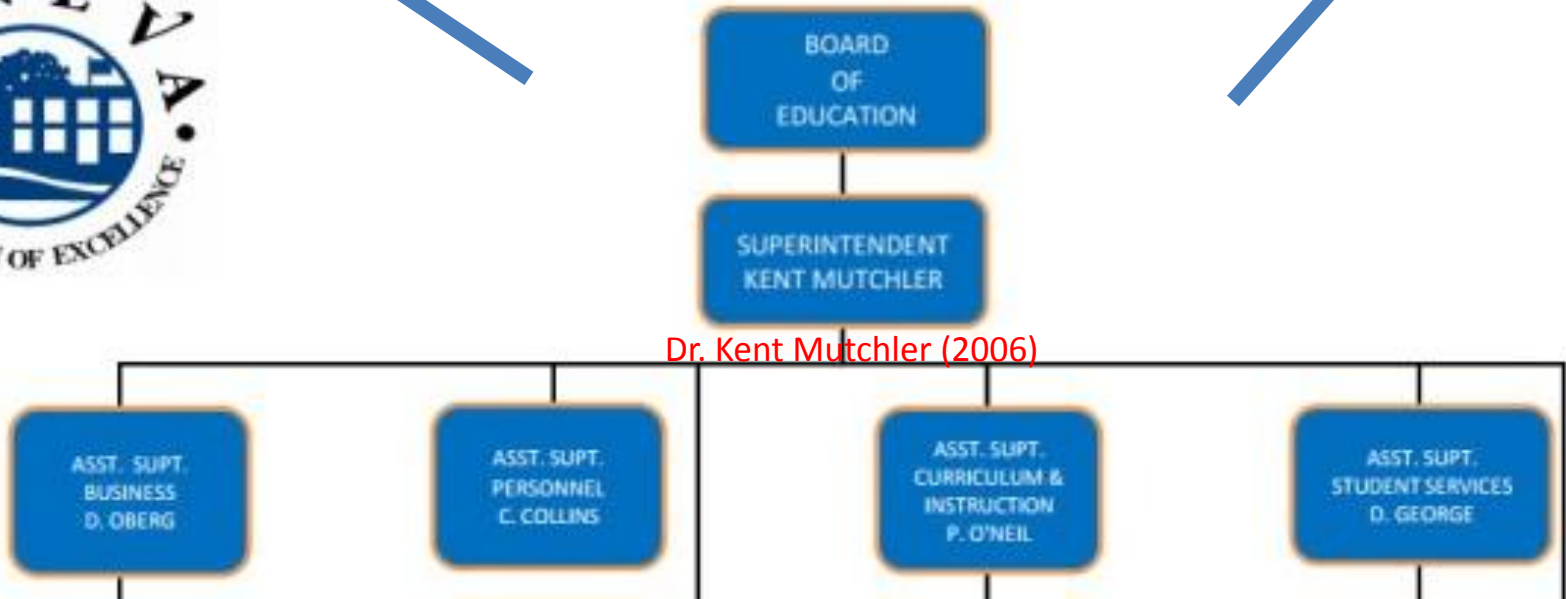
=2006

2012 School Board  
 Mark Grosso - President  
 Bill Wilson  
 Mary Stith  
 Tim Moran  
 Kelly Nowack  
 Matt Henry  
 Mike McCormick

2012



GENEVA COMMUNITY UNIT SCHOOL DISTRICT 304  
 Administrative Organizational Chart



Dr. Kent Mutchler (2006)

Rebecca Allerd (2006)

Source: [https://geneva304.org/district\\_information/PDF/Admin\\_Org\\_chart\\_job\\_descriptions](https://geneva304.org/district_information/PDF/Admin_Org_chart_job_descriptions)

# Did this answer give you confidence in a board elected to “respect taxpayer interests”?

On April 23, 2012, School Board President, Mark Grosso said he would respond to questions about the 2007 referendum enrollment projections, **but would not allow public comment after his explanation?**

*“..The Board President ... reported that he reviewed the five-year old, 2006 Kasarda report projections, and had spoken to both current and past members of the Board of Education in an attempt to determine how the projections were utilized.*

*He was told that **projections from the Kane County Regional Office of Education and local developers were used in addition to Kasarda’s**, and that it **appeared** to him that a **multiplier had been used** which resulted in a number higher than Kasarda’s.*

***He didn’t know why** but added there **would not be an investigation because too much time had gone by and too many of the people were no longer available**. He stated that we can’t go back in history, but going forward the Board of Education is concerned about and committed to reducing the District’s debt.”*

Source: <https://v3.boardbook.org/Public/PublicItemDownload.aspx?ik=32444669> – Minutes of School Board Meeting of April 23, 2012.



# What's the fallout?

- ✓ A typical elementary school houses 550 students. We built two new elementary schools (Williamsburg & Fabyan) as a result of the 2007 referendum.
- ✓ It was “advertised” that we would have 1618 more students by 2012.
- ✓ We have 121 (June, 2011) more students now than we did in 2006 and enrollments are projected to decline by an additional 400 students according to Kasarda’s 2011 report?
- ✓ A school board and administration that have a cloud of distrust over them.

**GENEVA DISTRICT 304 FACILITY UTILIZATION**  
**Enrollment as of December 31, 2010**

	<b>Capacity</b>	<b>Current Enrollment</b>	<b>Seats Available</b>	<b>% Capacity</b>
Harrison	563	435	128	<b>77.26%</b>
Western	561	328	233	<b>58.47%</b>
Mill Creek	657	392	265	<b>59.67%</b>
Heartland	564	452	112	<b>80.14%</b>
<b>New!</b> Williamsburg	550	541	9	<b>98.36%</b>
<b>New!</b> Fabyan	550	342	208	<b>62.18%</b>
GMS-South*	1281	775	506	<b>60.50%</b>
GMS-North	1100	721	379	<b>65.55%</b>
GHS	1800	1927	-127	<b>107.06%</b>
<b>Entire District</b>	<b>7626</b>	<b>5913</b>	<b>1713</b>	<b>77.54%</b>

Source: Geneva CAFR 6/30/10 page 95 and FOIA request answered by Kelly Munch, District Communications

# Can the school board solve their own problem?

*Until we do a look-back and understand how we got here, can we trust any financial decisions going forward? If they don't recognize the seriousness of this issue, will they be capable of making the drastic reductions necessary to go forward?*

## Was it fraud?

The person/s responsible for inflating the numbers needs to be identified.

If they are still on the board or within the administration, they have been already given a chance by Mr. Grosso to come forward. They need to be replaced.

A thorough investigation should begin immediately documenting who was questioned and their responses to determine if this was fraud.

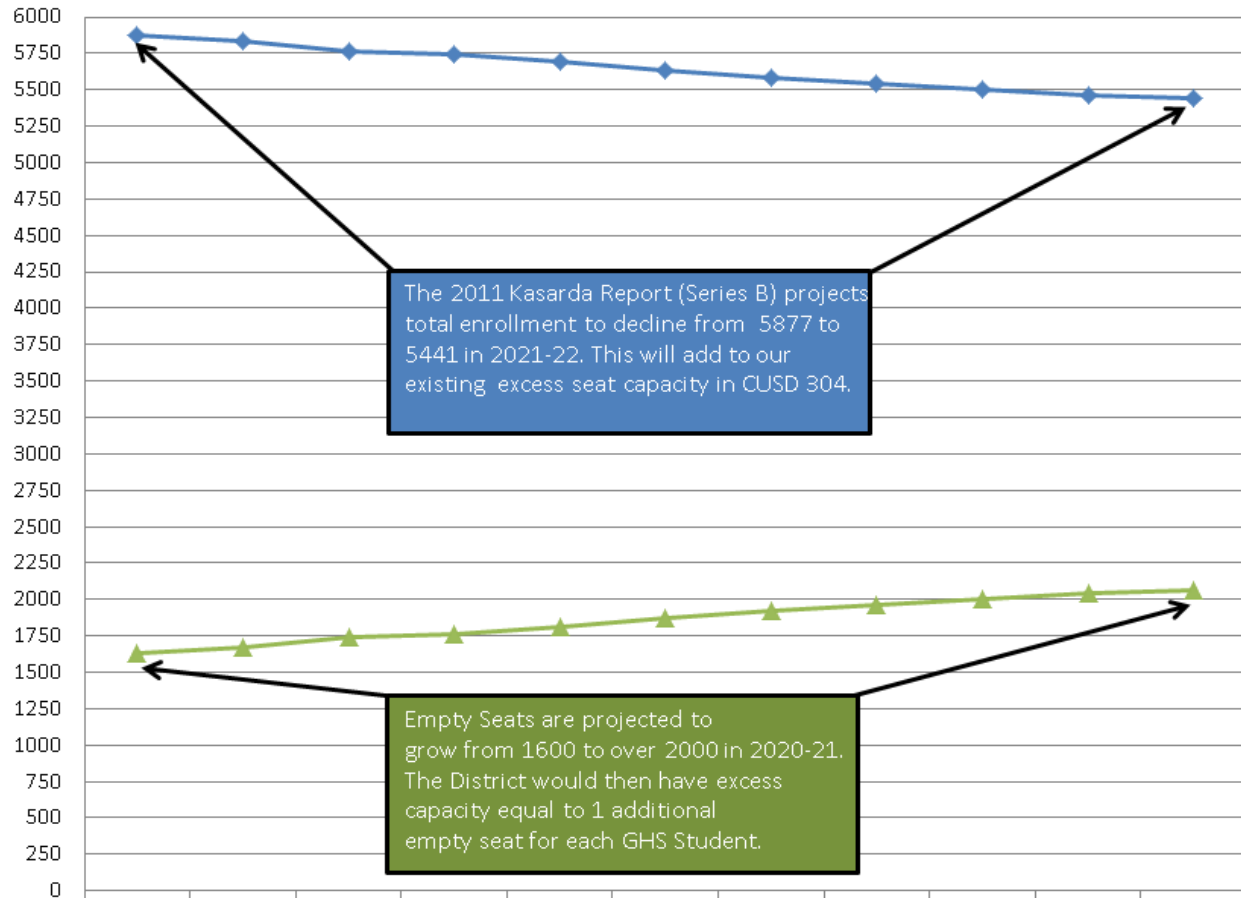
## Or was it incompetency?

- ✓ If not fraud, is it incompetency? Our school board is the top of the organization chart and represents taxpayers. If they feel they were misled by someone manipulating projections internally, they need to pursue that immediately. Were they never aware of the discrepancy, even though they all did have copies of the Kasarda report as far back as 2006-07?
- ✓ None of the board members showed interest in hearing the taxpayer's response to the explanation given by Mr. Grosso. Did they all accept that explanation and did they really all agree that there was no merit to hearing taxpayer's comments? Did they feel it was such a minute issue that they thought it OK to present it at the very end of a meeting and deny public comment?
- ✓ The board needs to change internal policy so that responsibility for accuracy of projections given to taxpayers is trackable and accountable.
- ✓ If it turns out to be "unexplainable", can the board pursue with their insurance provider the possibility of "errors and omissions compensation" to taxpayers to cover this gap of accountability?



## Enrollment and Excess Capacity Trend for CUSD 304

Enrollment and Excess Capacity



	2011-12 (A)	2012-13	2013-14	2014-15	2015-16	2016-17	2017-18	2018-19	2019-20	2020-21	2021-22
◆ Enrollment Projections Series B	5877	5830	5764	5741	5694	5630	5584	5543	5507	5467	5441
▲ Excess Seat Capacity	1629	1676	1742	1765	1812	1876	1922	1963	1999	2039	2065

Seat Capacity Data from CUSD 304

# CUSD 304 Referendum Projections Compared with 2005 and 2006 Kasarda Reports

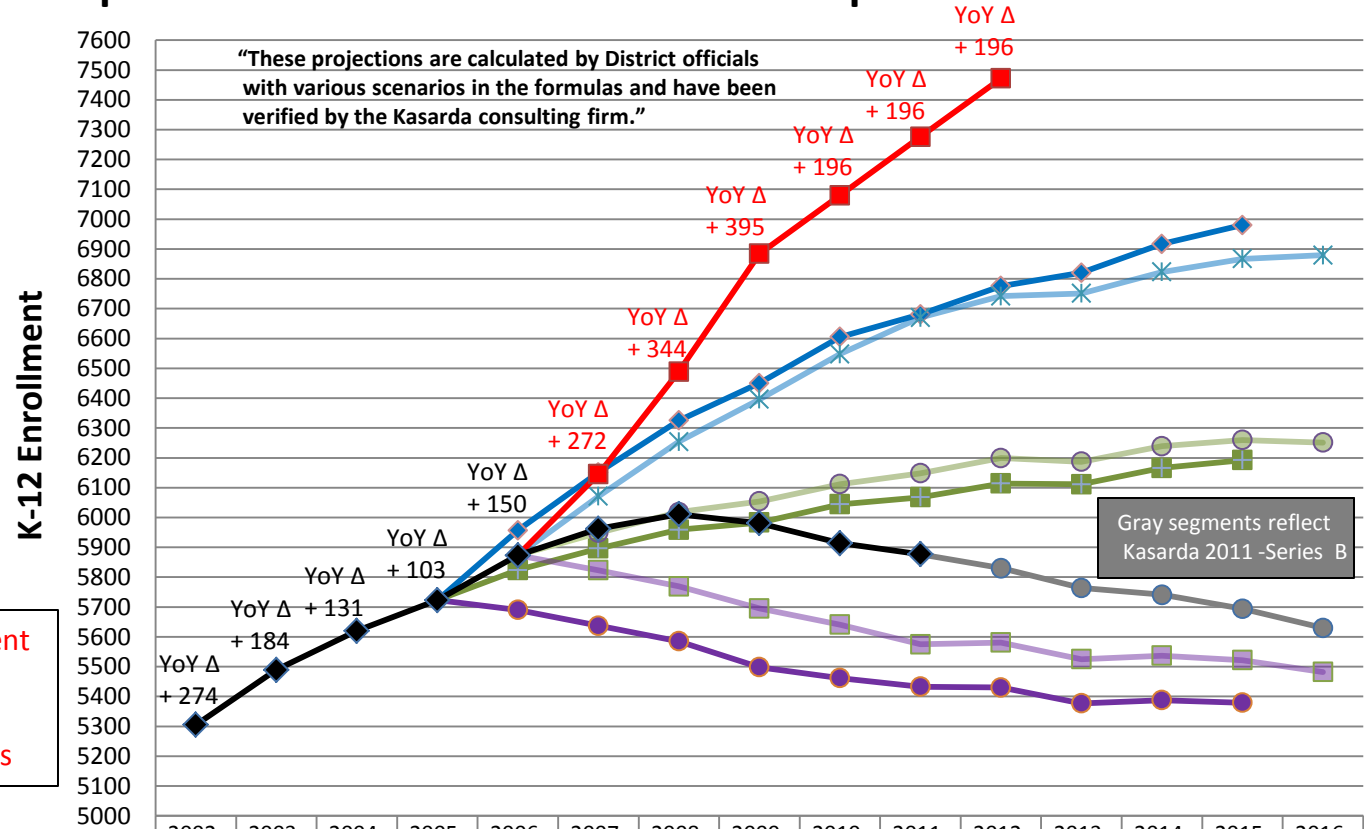
For 2012/13 CUSD 304  
2007 Referendum Projections  
Exceed Kasarda 2006 by:

Series A - 1891 students  
Series B - 1273 students  
Series C - 730 students

Exceed Kasarda 2011 by:

Series B - 1642 students

YoY Δ - indicates the enrollment  
change from the prior year  
Black - actual numbers  
Red - School Board Projections



	2002-03	2003-04	2004-05	2005-06	2006-07	2007-08	2008-09	2009-10	2010-11	2011-12	2012-13	2013-14	2014-15	2015-16	2016-17
2005 Expert's Minimum # Series A	5305	5489	5620	5723	5690	5,637	5,585	5498	5462	5433	5430	5377	5388	5379	
2005 Expert's Expected # Series B	5305	5489	5620	5723	5824	5896	5959	5983	6044	6068	6114	6111	6166	6192	
2005 Expert's Maximum # Series C	5305	5489	5620	5723	5957	6151	6325	6450	6605	6681	6776	6820	6917	6980	
2006 Expert's Minimum # Series A	5305	5489	5620	5723	5873	5823	5769	5695	5641	5575	5581	5525	5537	5522	5482
2006 Expert's Expected # Series B	5305	5489	5620	5723	5873	5949	6018	6054	6112	6148	6199	6187	6239	6260	6251
2006 Expert's Maximum # Series C	5305	5489	5620	5723	5873	6071	6254	6396	6548	6670	6742	6751	6823	6867	6879
District's Projection for Referendum	5305	5489	5620	5723	5873	6145	6489	6884	7080	7276	7472				
Actual 02-03/11-12 Kasarda 2011 "B" 12-13/16-17	5305	5489	5620	5723	5873	5962	6011	5981	5914	5877	5830	5764	5741	5694	5630